

**BETTE**  
BATHROOMS, NATURALLY



**BETTEFLOOR**

THE ORIGINAL.

# 0% HEIGHT 100% COMFORT

The flush-to-floor **BETTEFLOOR** shower area has developed into a successful product in just three years – in the private sector as well as in hotels or other buildings accessible by the public. The quality of the steel/enamel surface, the award-winning design and the well conceived installation system set previously unattainable standards.

The absolute flush-to-floor installation without any trip hazard is convenient and comfortable for people of every age class. And you are also reliably protected against water damage. In contrast to tiles, **BETTEFLOOR** covers the entire shower area. Therefore, no water can penetrate under the shower area, for example through porous joints.





Hygiene is also a question of comfort especially in the sensitive shower area.

The steel/enamel shower area ensures pleasant hygiene. What is already visually outstanding is also a definite advantage in terms of hygiene: the glassy surface without joints. The difference becomes particularly obvious in a comparison with tiled shower areas. Dirt does not adhere to the plain and hard **BETTEGLAZE®** surface. At the same time, the inorganic material provides no breeding ground for bacteria and germs. The steel/enamel surface can be easily cleaned with a damp cloth.

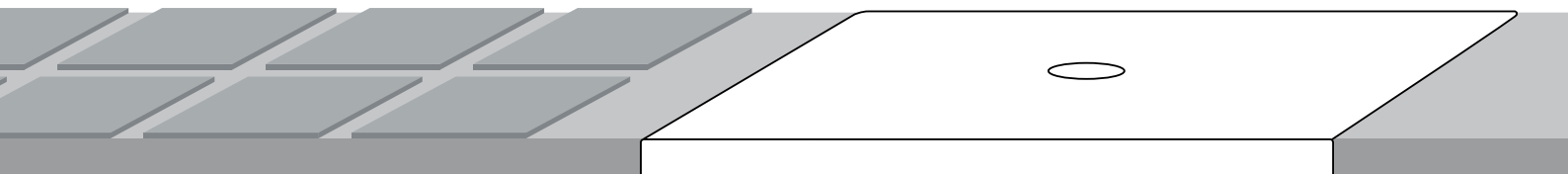
# 0% height 100% hygiene

Tiled shower areas involve high risks:

- The rough surface of the grouting makes cleaning difficult
- Germs and bacteria become deposited
- Porous grouting causes water damage
- Repairs are complicated and costly

It's different with **BETTEFLOOR**

- **BETTEGLAZE®** is particularly robust
- The glassy surface is extremely easy to keep clean
- Real hygiene in the sensitive shower area
- Optimum sealing
- Simple and quick installation
- Permanently accessible for troubleshooting







# 0% Height 100% Design

Bathrooms not only have one function – they are rooms of well-being which, in addition to the demands placed on comfort and hygiene, should also match the style of the user. And so that the user does not need to go without anything, we offer **BETTEFLOOR** in a variety of dimensions: square and rectangular, from the standard size to generous dimensions in which two persons can comfortably take a shower together.

*Dimensions (length x width):*

80 x 80 cm	100 x 70 cm	120 x 75 cm	140 x 80 cm	160 x 80 cm	180 x 80 cm
	100 x 75 cm	120 x 80 cm	140 x 90 cm	160 x 90 cm	180 x 90 cm
90 x 70 cm	100 x 80 cm	120 x 90 cm	140 x 100 cm	160 x 100 cm	180 x 100 cm
90 x 75 cm	100 x 90 cm	120 x 100 cm			
90 x 80 cm	100 x 100 cm	120 x 120 cm	150 x 80 cm	170 x 75 cm	
90 x 90 cm			150 x 90 cm	170 x 90 cm	
	110 x 80 cm	130 x 80 cm	150 x 100 cm	170 x 100 cm	
	110 x 90 cm	130 x 90 cm			
	110 x 100 cm	130 x 100 cm			



reddot



DESIGNPREIS  
2008  
NOMINIERT



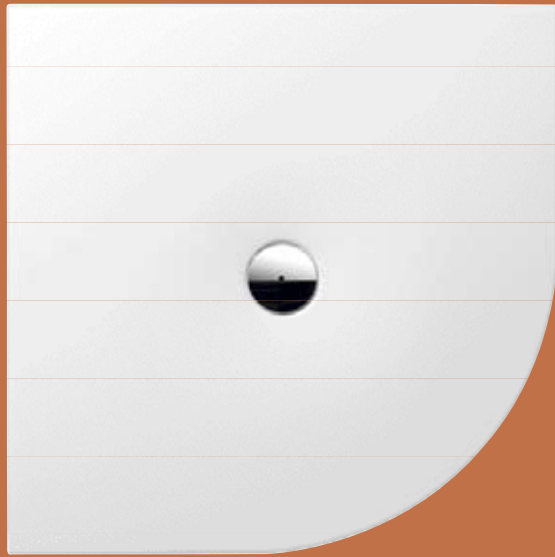
Innovationpreis  
anTech + health

SCHÖNER  
WOHNEN



DESIGN PLUS





# A whole bit rounder

With **BETTEFLOOR CORNER** the trend towards flush-to-floor shower areas is taking an elegant step into the next round. The soft shape fits harmoniously into the overall picture. The shower tray is ideally suited as an attractive space-saving solution for small bathrooms.

*Dimensions (length x width):*

*80 x 100 cm*

*90 x 90 cm*

*100 x 80 cm*

*100 x 100 cm*







# Saving space across the board

The **BETTEFLOOR CARO** combines many advantages: The generous effect of a flush-to-floor shower area, the hygienic surface made of steel/enamel, the space-saving design with a cut-off corner and a modern straight-lined pattern. Small bathrooms appear more spacious, modern linear patterns remain clear.

*Dimensions (length x width):*

*90 x 90 cm*

*100 x 100 cm*



# Precision in form ...

Top-class quality must prove its worth in every detail. The corners of the **BETTEFLOOR** are not round but actually angular and therefore can be excellently integrated into the clear-cut linear pattern dictated by the tiles. And in the edge area straight contours permit a uniform and narrow joint pattern.

The flat drain outlet cover is integrated flush with the surface. Thanks to its size, it covers the drain, its flat form does not disturb when you enter the shower area. So that flush-to-floor means exactly that.

**BETTEFLOOR** was designed for this field of application with great precision and technical expertise – in the well-known **Bette** quality.





## ...and colour.

In addition to the standard sanitary colours, we offer the **BETTEFLOOR** in the illustrated above matt shades, which are geared to the current tile and floor trends. On request, **BETTEFLOOR** can also be provided with a drain fitting in the same colour as the shower area.

Colour deviations due to printing are possible. Your local dealer will be pleased to show you the original colour specimens.





# Perfect from the ground up

The new **BETTEINSTALLATION SYSTEM FLUSH-TO-FLOOR** precisely matches the floor level of the **BETTEFLOOR** shower area and the super-flat **BETTESHOWER TRAYS**. Installation is quick, easy and absolutely safe. With a minimum installation height of 65 mm for drainage through a floor cavity and 110 mm with a standardised drain, the installation system is the ideal solution for flush-to-floor installation, also for the refurbishment of old buildings and fiddly renovation work.

**BETTEFLOOR** in conjunction with the **BETTEINSTALLATION SYSTEM FLUSH-TO-FLOOR** complies with the requirements placed on sound insulation in structural engineering in accordance with DIN 4109. Tested and confirmed by the Fraunhofer Institute.

The **BETTEFLOOR** shower area is completely installed in just a few work steps. Please see for yourself: you will find a short film demonstrating the step-by-step installation at [www.bette.de](http://www.bette.de).



The height-adjustable feet can be screwed into the frame and infinitely adjusted from 65 to 180 cm for maximum flexibility.



The frame is positioned at the desired location. The drainage pipe is already prepared, too.



During alignment, the tiling aids help to mark the later upper edge. The frame is secured in place and the casing aids provided are installed. This produces a placeholder with millimetre precision as the screed can be laid right up to the edge. Trouble with inaccurate recesses is a thing of the past.

**Note:**

The installation frame is 5 mm larger all around than the shower area. The tiling aids make alignment with the wall easier. They simulate the later outer edge of the shower area. The necessary distance to the plastered wall is derived from the tile thickness + tile adhesive.



The sealing fleece is glued to the frame, the seal with the building structure is provided with the barrier coating. The PE sealing strip is additionally installed on the sealing fleece around the frame. The frame can now be adapted, if required, to suit the dimension of the tile upper edge.

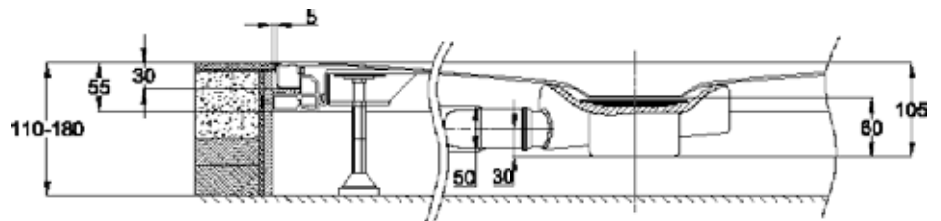


The tiling aids are inserted where required and the floor and walls are tiled. The tiling aids permit the tile layer to work with pinpoint accuracy. The shower area does not even need to be installed for this purpose.

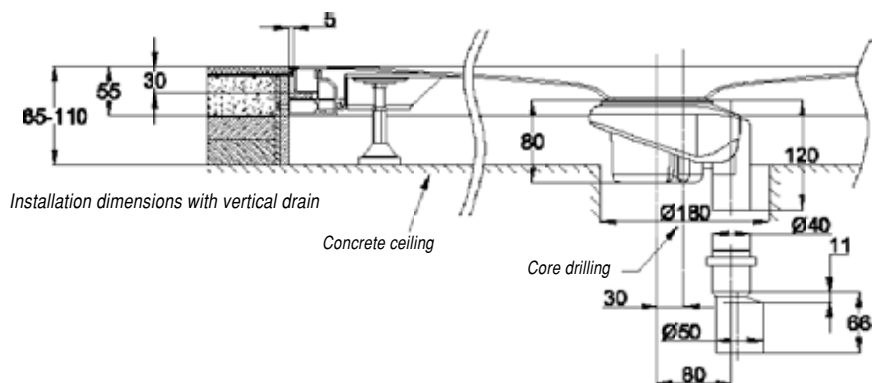


Finally, the shower area is inserted into the frame and the outlet fitting completely connected. The joints are provided with an elastic sealant. This makes the entire structure permanently accessible for inspection work.

The waste fitting specially developed for **BETTEFLOOR** with a draining capacity of 0.85 l/sec. and a standard head permits individual height compensation for floor structures from 110 to 180 mm. If a vertical waste fitting is used for draining through a floor cavity, the installation height is reduced to a minimum of 65 mm.



Installation dimensions with side drain



Installation dimensions with vertical drain



# Comfort from one source

No one else knows our shower areas as well as we do. We have now channelled our passion for **BETTEFLOOR** and developed a sealing technique for shower screens which is an ideal match. In terms of quality and appearance, everything that characterises **BETTEFLOOR** also applies to the new **BETTESHOWER SCREENS**: high-quality materials and convincing appearance. With the matching shower screen, taking a shower becomes a relaxing affair.

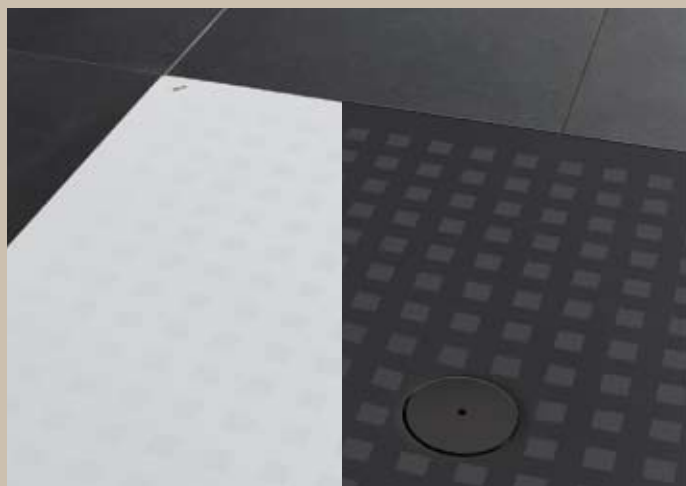
**Magnetism as splash protection:**

The swing-type elements of the **BETTEShower Screens** are provided with a magnetic strip on the bottom edge which presses the seal onto the edge of the steel/enamel **BETTEBATHS** and **SHOWER TRAYS** by means of a raising and lowering mechanism. In this way an unobtrusive device prevents splashing water from escaping. **BETTEShower Screens** comply with the EN 144328 standard in terms of water-tightness and reliable product quality.



**BETTEShower Screens** excel through their easy cleaning features. For example, all the fittings and horizontal seals are flush with the inside of the glass surface and the handle can also be sunk flush on the inside. After a shower, water and dirt can be easily removed from the glass – without any disruptive elements. The use of profiles has been limited to the basic essentials. The ease of cleaning is supported by the **BETTEREALGLASS® PLUS** coating.



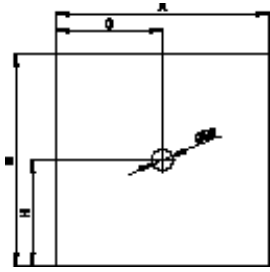


## Extras for comfort and safety

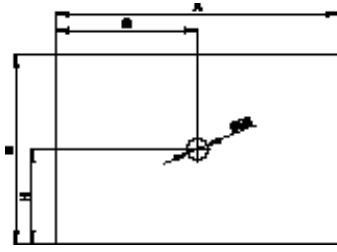
The additional refinement of the existing and time-tested enamel surface with **BETTEGLAZE® PLUS** permanently maintains the unique beauty of the surface and makes cleaning easier. The crystal-clear polymer film allows drops of water to drain off even more easily thanks to its water-repellent action. Less lime scale is produced and cleaning work reduced. **BETTEGLAZE® PLUS** also protects the environment – for aggressive cleaning agents can be dispensed with.

The surface coating with **BETTEANTI-SLIP** provides additional safety when standing in the shower without diminishing the pleasant feel of the surface texture. And the visual effect and colours are retained. White baths are given a white coating. **BETTEANTI-SLIP** is available in a transparent version for the coloured shower areas. In conjunction with our special **BETTEANTI-SLIP** surface, **BETTEFLOOR** is slip-resistant according to E DIN 18030:2006. **BETTEFLOOR** with the anti-slip coating in the size 120 x 120 cm is barrier-free in accordance with E DIN 18030:2006 for category A apartments and living areas.

## BETTEFLOOR

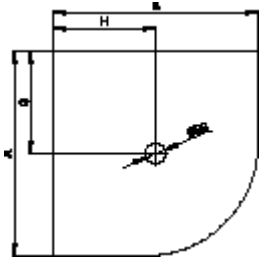


Models with equal shank lengths

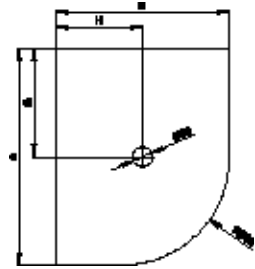


Models with unequal shank lengths

## BETTEFLOOR CORNER

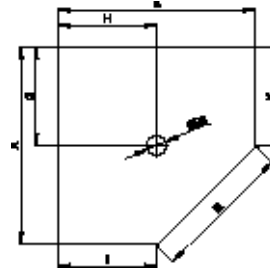


Models with equal shank lengths



Models with unequal shank lengths

## BETTEFLOOR CARO



BETTEFLOOR	A	B	G	H	article no.	drain
80 x 80 cm	800	800	400	400	5831	Ø 90
90 x 70 cm	900	700	450	350	5711	Ø 90
90 x 75 cm	900	750	450	375	5841	Ø 90
90 x 80 cm	900	800	450	400	8751	Ø 90
90 x 90 cm	900	900	450	450	5931	Ø 90
100 x 70 cm	1000	700	500	350	5881	Ø 90
100 x 75 cm	1000	750	500	375	1651	Ø 90
100 x 80 cm	1000	800	500	400	5491	Ø 90
100 x 90 cm	1000	900	500	450	1661	Ø 90
100 x 100 cm	1000	1000	500	500	5941	Ø 90
110 x 80 cm	1100	800	550	400	8731	Ø 90
110 x 90 cm	1100	900	550	450	8631	Ø 90
110 x 100 cm	1100	1000	550	500	8735	Ø 90
120 x 75 cm	1200	750	600	375	1671	Ø 90
120 x 80 cm	1200	800	600	400	1681	Ø 90
120 x 90 cm	1200	900	600	450	1261	Ø 90
120 x 100 cm	1200	1000	600	500	8661	Ø 90
120 x 120 cm	1200	1200	600	600	8721	Ø 90
130 x 80 cm	1300	800	650	400	5793	Ø 90
130 x 90 cm	1300	900	650	450	5791	Ø 90
130 x 100 cm	1300	1000	650	500	5794	Ø 90
140 x 80 cm	1400	800	700	400	5801	Ø 90
140 x 90 cm	1400	900	700	450	5836	Ø 90
140 x 100 cm	1400	1000	700	500	5851	Ø 90
150 x 80 cm	1500	800	750	400	5937	Ø 90
150 x 90 cm	1500	900	750	450	5936	Ø 90
150 x 100 cm	1500	1000	750	500	5946	Ø 90
160 x 80 cm	1600	800	800	400	5957	Ø 90
160 x 90 cm	1600	900	800	450	5966	Ø 90
160 x 100 cm	1600	1000	800	500	5969	Ø 90
170 x 75 cm	1700	750	850	375	5994	Ø 90
170 x 90 cm	1700	900	850	450	5991	Ø 90
170 x 100 cm	1700	1000	850	500	5817	Ø 90
180 x 80 cm	1800	800	900	400	5981	Ø 90
180 x 90 cm	1800	900	900	450	5988	Ø 90
180 x 100 cm	1800	1000	900	500	5818	Ø 90

BETTEFLOOR CORNER	A	B	G	H	article no.	drain
80 x 100 cm	800	1000	400	500	6731	Ø 90
90 x 90 cm	900	900	450	450	5421	Ø 90
100 x 80 cm	1000	800	500	400	6751	Ø 90
100 x 100 cm	1000	1000	500	500	5451	Ø 90

BETTEFLOOR CARO	A	B	G	H	I	K	R	article no.	drain
90 x 90 cm	900	900	450	450	450	450	636	7191	Ø 90
100 x 100 cm	1000	1000	500	500	500	500	707	7211	Ø 90

**Bette GmbH & Co. KG**

Heinrich-Bette-Straße 1  
D-33129 Delbrück  
Tel.: + 49 5250 511-0  
Fax: + 49 5250 511-130  
info@bette.de  
www.bette.de

**United Kingdom + Ireland:**

**Bette GmbH & Co. KG UK**  
Office 2  
The Courtyard  
Hall Farm  
Lockington  
Derbyshire  
DE74 2RH  
Tel. +44 844 800 0547  
Fax +44 844 800 0548  
E-mail: info@bette.co.uk

Our articles are supplied exclusively through the sanitary wholesale trade.

Concept, design, text:

gambit marketing & communication GmbH, Dortmund.

Lithography: Divis, Hagen.

Overall production: Druckerei Bösmann, Detmold.

Printed on GALAXI Keramik. Made by m-real Zanders GmbH.

Supplied by Papier Union.

You will find the entire range of baths and showers in our catalogues and at  
www.bette.de.

Copyright:

All reserves to pictures and brands reserved.